



ULTRON U-501

Usable tank capacity: approx. 1 l
Usable bath dimensions:
- length - 120 mm
- width - 110 mm
- height - 70 mm
Total mass: 3 kg

Input power of ultrasonic generator: 80 W
Heater output: 220 W
Total input power: 300 W
Maximum heating temperature: 55°C
Ultrasonic oscillation frequency: 21,5 kHz or 40 kHz



ULTRON U-502

Usable tank capacity: approx. 1,4 l
Usable bath dimensions:
- length - 120 mm
- width - 110 mm
- height - 110 mm
Total mass: 3 kg

Input power of ultrasonic generator: 80 W
Heater output: 220 W
Total input power: 300 W
Maximum heating temperature: 55°C
Ultrasonic oscillation frequency: 21,5 kHz or 40 kHz



ULTRON U-503

Usable tank capacity: approx. 1,6 l
Usable bath dimensions:
- length - 210 mm
- width - 110 mm
- height - 70 mm
Total mass: 3 kg

Input power of ultrasonic generator: 150 W
Heater output: 220 W
Total input power: 370 W
Maximum heating temperature: 55°C
Ultrasonic oscillation frequency: 21,5 kHz or 40 kHz



ULTRON U-504

Usable tank capacity: approx. 2,5 l
Usable bath dimensions:
- length - 270 mm
- width - 120 mm
- height - 70 mm
Total mass: 4,5 kg

Input power of ultrasonic generator: 160 W
Heater output: 250 W
Total input power: 410 W
Maximum heating temperature: 55°C
Ultrasonic oscillation frequency: 21,5 kHz or 40 kHz



ULTRON U-505

Usable tank capacity: approx. 3,5 l
Usable bath dimensions:
- length - 270 mm
- width - 120 mm
- height - 110 mm
Total mass: 5,5 kg

Input power of ultrasonic generator: 160 W
Heater output: 250 W
Total input power: 410 W
Maximum heating temperature: 55°C
Ultrasonic oscillation frequency: 21,5 kHz or 40 kHz



ULTRON U-506

Usable tank capacity: approx. 4 l
Usable bath dimensions:
- length - 480 mm
- width - 115 mm
- height - 70 mm
Total mass: 7 kg

Input power of ultrasonic generator: 300 W
Heater output: 450 W
Total input power: 750 W
Maximum heating temperature: 55°C
Ultrasonic oscillation frequency: 21,5 kHz or 40 kHz



ULTRON U-507

Usable tank capacity: approx. 5,5 l
Usable bath dimensions:
- length - 300 mm
- width - 280 mm
- height - 70 mm
Total mass: 10 kg

Input power of ultrasonic generator: 310 W
Heater output: 250 W
Total input power: 560 W
Maximum heating temperature: 55°C
Ultrasonic oscillation frequency: 21,5 kHz or 40 kHz



ULTRON U-509

Usable tank capacity: approx. 9 l
Usable bath dimensions:
- length - 300 mm
- width - 280 mm
- height - 120 mm
Total mass: 12 kg

Input power of ultrasonic generator: 320 W
Heater output: 600 W
Total input power: 920 W
Maximum heating temperature: 55°C
Ultrasonic oscillation frequency: 21,5 kHz or 40 kHz

ULTRON U-2 cleaning station for washing out photopolymer.

Usable tank capacity: approx. 2,5 l
Usable bath dimensions:
- length - 290 mm
- width - 270 mm
- height - 70 mm
Total mass: 8 kg

Input power of ultrasonic generator: 150 W
Heater output: 300 W
Total input power: 450 W
Maximum heating temperature: 80°C
Ultrasonic oscillation frequency: 21,5 kHz



ULTRON U-32A

Usable tank capacity: approx. 10 l
Usable bath dimensions:
- length - 475 mm
- width - 285 mm
- height - 75 mm
Total mass: 10 kg

Input power of ultrasonic generator: 340 W
Heater output: 500 W
Total input power: 840 W
Maximum heating temperature: 80°C
Ultrasonic oscillation frequency: 21,5 kHz or 40 kHz



ULTRON U-32B

Usable tank capacity: approx. 15 l
Usable bath dimensions:
- length - 475 mm
- width - 285 mm
- height - 115 mm
Total mass: 15 kg

Input power of ultrasonic generator: 350 W
Heater output: 500 W
Total input power: 850 W
Maximum heating temperature: 80°C
Ultrasonic oscillation frequency: 21,5 kHz or 40 kHz



ULTRON U-32C

Usable tank capacity: approx. 23 l
Usable bath dimensions:
- length - 475 mm
- width - 280 mm
- height - 170 mm
Total mass: 20 kg

Input power of ultrasonic generator: 360 W
Heater output: 1000 W
Total input power: 1360 W
Maximum heating temperature: 80°C
Ultrasonic oscillation frequency: 21,5 kHz or 40 kHz



ULTRON U-70

Usable tank capacity: approx. 80 l
Usable bath dimensions:
- length - 400 mm
- width - 500 mm
- height - 400 mm
Total mass: 48 kg

Input power of ultrasonic generator: 700 W
Heater output: 2000 W
Total input power: 2700 W
Maximum heating temperature: 80°C
Ultrasonic oscillation frequency: 21,5 kHz or 40 kHz



ULTRON U-100

Usable tank capacity: approx. 144 l
Usable bath dimensions:
- length - 640 mm
- width - 500 mm
- height - 450 mm
Total mass: 96 kg

Input power of ultrasonic generator: 1500 W
Heater output: 4200 W
Total input power: 5700 W
Maximum heating temperature: 80°C
Ultrasonic oscillation frequency: 21,5 kHz or 40 kHz



Device configuration and cleaning agents are selected individually according to user needs. Dimensions of wash tubs are tailor-made.

Available additional equipment:

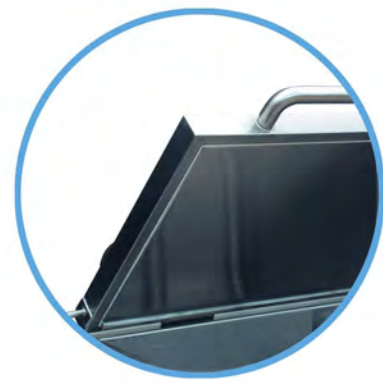
- microprocessor controller
- basket for small workpieces
- draining tubs
- tables

Application:

Industry: cleaning of sub-assemblies, regeneration of mesh filters, cleaning required to remove abrasive compounds, cleaning of vulcanisation moulds, cleaning small castings, moulds, little dies, cleaning of high-pressure apparatus, cleaning of anilox rolls, cleaning of baking baskets

Laboratories and hospitals: cleaning of laboratory glassware, pipettes, fluid degassing, emulsion preparation, cleaning of prostheses, dental instruments

Jeweller's craft: removal of abrasive compounds and casting residues, cleaning of contaminated products, catalogue cleaners



Tank cover
Special tank cover designed to ensure minimum heat loss



Pneumatic cylinder
Easier cover opening and closing.



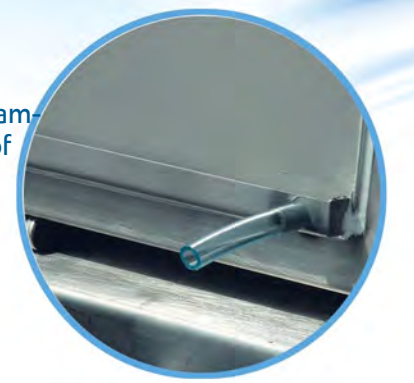
Closed-circuit pump
Circulation pump installed externally provides easy access during the cleaning process or deaeration.



Drain valves
Located at the lowest tank point to ensure full discharge of sludge and other impurities.



Condensate drainage system
Provides condensate discharge into the station chamber. Helps maintain clearness at the working site of the cleaning station.



Microprocessor controller
The controller makes it possible to replace a time-switch and a thermostat as well as ensures smooth control of operating time and heating temperature in the cleaning station. The controller can be set to force pulsing mode of operation. Pulsing mode (e.g. ultrasounds for 1.0 sec. and pause for 0.2 sec.) facilitates solution degasification and the contaminants fall into the settler quicker. During the pause period, gas bubbles freely escape from the solution upwards, whereas contaminants fall to the bottom.

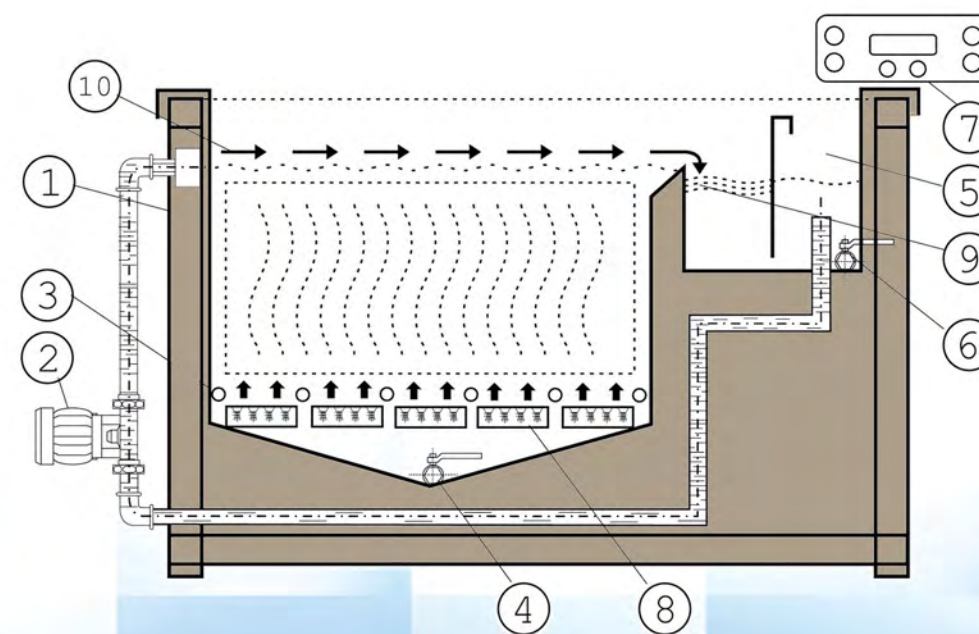
Application:

- cleaning prior to powder coating, galvanisation (degreasing, phosphate treatment)
- cleaning of sub-assemblies
- regeneration of mesh filters
- removal of abrasive compounds
- cleaning of coolers, exchangers
- cleaning of vulcanisation moulds
- cleaning of small castings, moulds, little dies
- cleaning of high-pressure apparatus

Features:

- top-surface rinsing system
- settler for grease and light contaminants
- sludge settler
- effective contamination separation
- microprocessor controller
- thermal and acoustic insulation
- customisable for use within process lines
- fluid filtration

The U-1000 cleaning stations offer efficient use of cleaning agents.



1. Tub frame
2. Rinsing pump
3. Heaters
4. Sludge drain
5. Upper settler
6. Settler drain
7. Controller
8. Ultrasonic panels
9. Dirty compartment
10. Rinsing direction